


WORD OF MOUTH



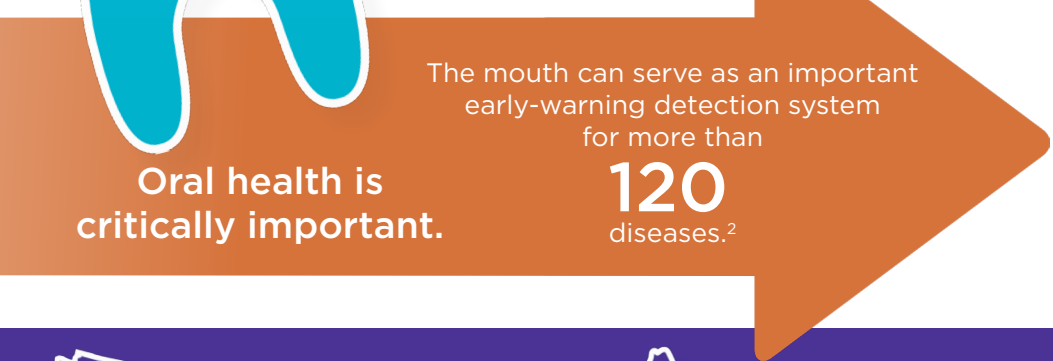
The Importance of Oral Health

Oral health is connected to overall health.



More than **90%** of all systemic diseases are linked to oral health.¹
Poor oral health can lead to and escalate serious overall health issues.

Patients with even mild periodontal disease were **2X** as likely to have a stroke compared to those with healthy mouths.¹



Oral health is critically important.

The mouth can serve as an important early-warning detection system for more than **120** diseases.²

Dentists and dental hygienists are powerful allies for your overall health and well-being.



Not enough people go to the dentist.

Visits to dentists among working-age adults are at an all-time low across the United States.³



Fewer than **40%** of working-age adults are seeing a dentist in any given year.³

Poor oral health comes at a cost—to your wallet and to your health.

An untreated cavity can cost you more than **\$6,000** over the course of your lifetime.⁴

Untreated, often preventable oral diseases send more than **2.1 million Americans** to the emergency room each year, costing the health care system **\$1.9 billion** annually.⁵



The good news is cavities and periodontal disease are nearly 100% preventable.

By taking care of your oral health and visiting a dentist regularly, you can help avoid serious and costly health problems.

For more information on our Word of Mouth campaign and resources on the importance of oral health, visit: deltadentalco.com/wordofmouth.aspx

A growing coalition of leading organizations are joining together with us in this effort to educate Coloradans on the importance of oral health.



¹ "Atherosclerosis Risk in Communities Study," University of South Carolina School of Medicine, 2017

² "Importance of Oral Health to Overall Health," Academy of General Dentistry, February 2017

³ "Dental Care Utilization Steady Among Working-Age Adults and Children, Up Slightly Among the Elderly," Health Policy Institute Research, October 2016

⁴ Delta Dental of California's data of commercially insured patients (January-June 2012)

⁵ "Emergency Department Visits for Dental Conditions - A Snapshot," Health Policy Institute, 2014